
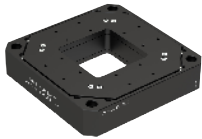
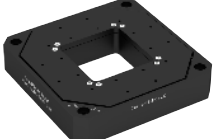
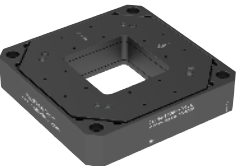
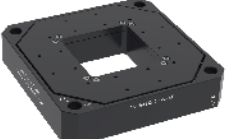


Sheet 3 -Piezo scanner with aperture, Carrier.(H)Sxx Series

	Single-axis X / Z	XY stage- XY	XYZ stage- XYZ	XYZ stage- ZTxTy	XYZ stage- XYRz	
Standard Carrier.S	Carrier.S150.Z.C	 Carrier.S200.xy.C, Carrier.S200.xyz.C		N/A	N/A	Standard Carrier.S
High load.High stability Carrier.HS	 Carrier.HS100.Z.C	 Carrier.HS100.XY.C	N/A	 Carrier.HS100.ZTxTy.C	 Carrier.HS100.XYRz.C	High load.High stability Carrier.HS

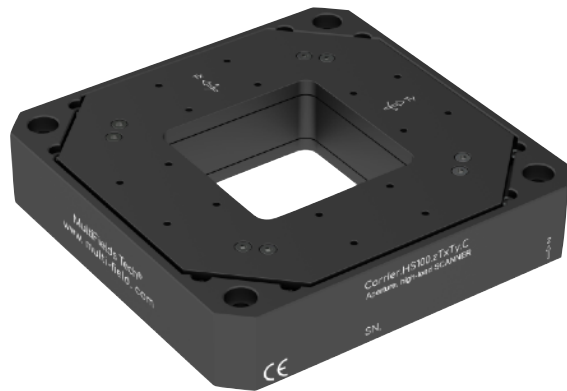
Piezoelectric Motion - RT

Piezoelectric Motion - RT

# Piezo scanning Motion·High load with aperture– Carrier.HS100.zTxTy.C

RT-piezo scanning solution -High load with aperture“carrier.HS series”

High load-Z and tip/tilt stage with 3 axes.

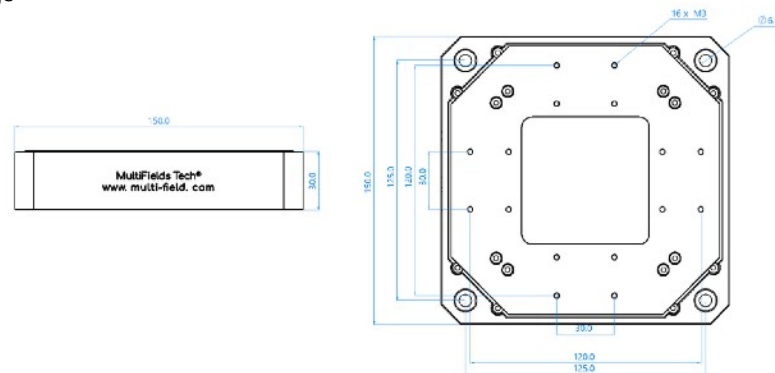


Carrier.HS100.zTxTy.C

## Feature

- Z,  $\theta_x$  &  $\theta_y$  scanning motion;
- 100  $\mu$ m travel range, 1 mrad & 1 mrad
- Close loop resolution < 1 nm;
- Max Load 5 kg;
- For microscopy-super resolution solutions.
- Non-magnetic (.NM) & ultra- high vacuum (.UHV) optional

## 2D-Drawings



## Carrier.HS100.zTxTy.C – Specification

	Optional Versions ⇄	Standard
.UHV, ultra-high vacuum compatible;		
1	Direction of movement	Z, $\theta_x$ & $\theta_y$
2	Footprint, height	150 mm × 150 mm × 30 mm
3	Mainbody Materials	Aluminium alloy & Stainless
4	Travel Range (Z, $\theta_x$ & $\theta_y$ )	100 $\mu$ m, 1 mrad & 1mrad
5	Effective through-hole size	66 mm × 66 mm
Motion and positioning sensor		
6	Linearity Error in Z	0.035%
7	Linearity Error in $\theta$	0.15%
8	ZResolution (close loop/open loop)	1 nm / 0.5 nm
9	$\theta$ Resolution (close loop/open loop)	0.05 urad / 0.04 urad
10	Repeatability (Z & $\theta$ )	± 10 nm, ± 0.1 urad
11	Rigidity	2 N/ $\mu$ m
12	ZResonance Frequency (unloaded/2.5 kg)	480 Hz/ 160 Hz
13	$\theta$ Resonance Frequency (unloaded/2.5 kg)	500 Hz/ 150 Hz
14	Max Load	2.5 kg
15	Integrated sensor(close loop)	Capacitive
16	Max Operating Voltage	Max. 150 V
Others		
17	Operating temperature range	15 ~40 °C
18	Weight	1 kg
19	Mount	suitable for Carrier.L7550.XY