
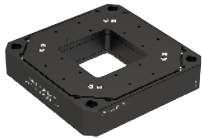
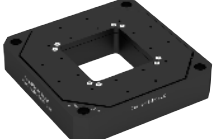
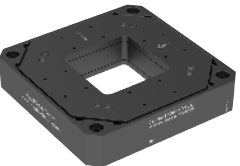
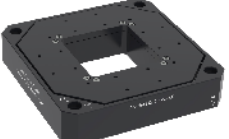


Sheet 3 -Piezo scanner with aperture, Carrier.(H)Sxx Series

	Single-axis X / Z	XY stage- XY	XYZ stage- XYZ	XYZ stage- ZTxTy	XYZ stage- XYRz	
Standard Carrier.S	Carrier.S150.Z.C	 Carrier.S200.xy.C, Carrier.S200.xyz.C		N/A	N/A	Standard Carrier.S
High load.High stability Carrier.HS	 Carrier.HS100.Z.C	 Carrier.HS100.XY.C	N/A	 Carrier.HS100.ZTxTy.C	 Carrier.HS100.XYRz.C	High load.High stability Carrier.HS

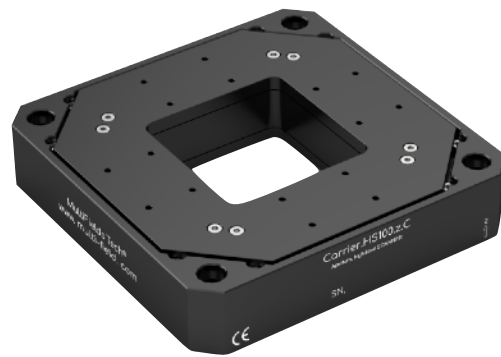
Piezoelectric Motion - RT

Piezoelectric Motion - RT

Piezo scanning Motion– Carrier.HS100.z.C

RT-Piezo scanning motion– high load with aperture “Carrier HS series”

High speed Z scanner, Large aperture, capacitive sensor

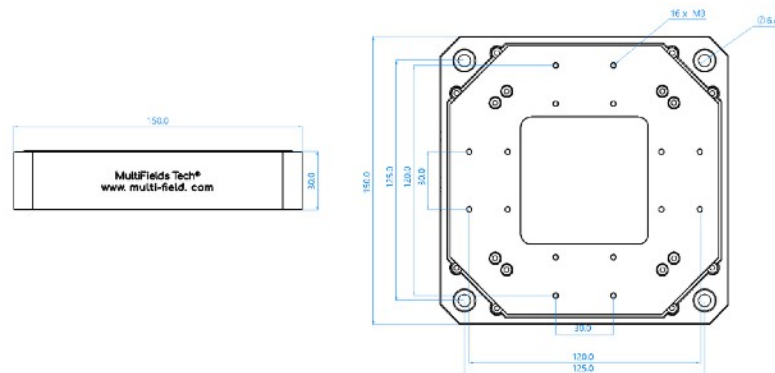


Carrier.HS100.z.C

Feature

- Travel range(Z direction): 100 μ m
- Close loop resolution < 1 nm;
- Max Load 3 kg;
- For microscopy-super resolution solutions.
- Non-magnetic (.NM) & ultra- high vacuum (.UHV) options

2D-Drawings



Carrier.HS100.z.C, objective scanner for auto focus – Specification

Optional Versions ⇨		Standard
		.NM, non-magnetic; .UHV, ultra-high vacuum compatible;
1	Direction of movement	Z direction
2	Footprint, height	150 mm × 150 mm × 30 mm
3	Mainbody Materials	Aluminium alloy & Stainless
4	Travel Range	100 μ m
5	Effective through-hole size	66 mm × 66 mm
Motion and positioning sensor		
6	Linearity Error (Z direction)	0.035%
7	Resolution (close loop/open loop)	1 nm / 0.3 nm
8	Repeatability	± 10 nm
9	Rigidity	2.5 N/ μ m
10	Resonance Frequency (unloaded/2.5 kg)	500 Hz/ 200 Hz
11	Max Load	5 kg
12	Integrated sensor(close loop)	Capacitive
13	Max Operating Voltage	Max. 150 V
Other		
14	Operating temperature range	15 ~40 °C
15	Weight	1 kg