
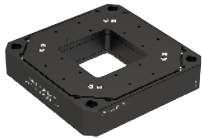
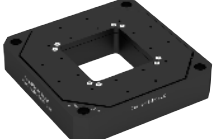
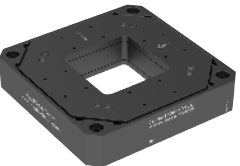
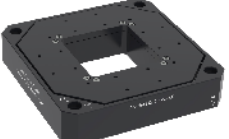


Sheet 3 -Piezo scanner with aperture, Carrier.(H)Sxx Series

	Single-axis X / Z	XY stage- XY	XYZ stage- XYZ	XYZ stage- ZTxTy	XYZ stage- XYRz	
Standard Carrier.S	Carrier.S150.Z.C	 Carrier.S200.xy.C, Carrier.S200.xyz.C		N/A	N/A	Standard Carrier.S
High load.High stability Carrier.HS	 Carrier.HS100.Z.C	 Carrier.HS100.XY.C	N/A	 Carrier.HS100.ZTxTy.C	 Carrier.HS100.XYRz.C	High load.High stability Carrier.HS

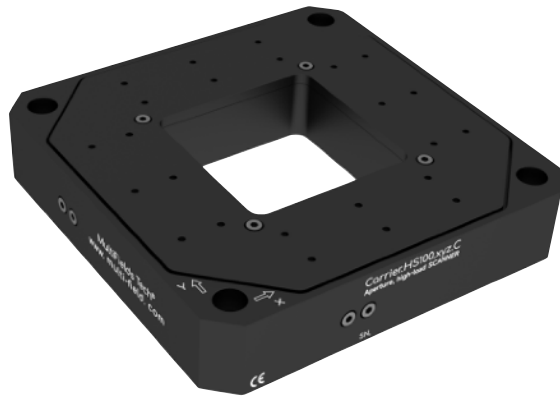
Piezoelectric Motion - RT

Piezoelectric Motion - RT

Piezo scanning Motion·High load with aperture-Carrier.HS100.xy.C

RT-piezo scanning solution -High load with aperture"carrier.HS series"

High load·XY scanner, Large aperture,Parallel kinematics,capacitive sensor

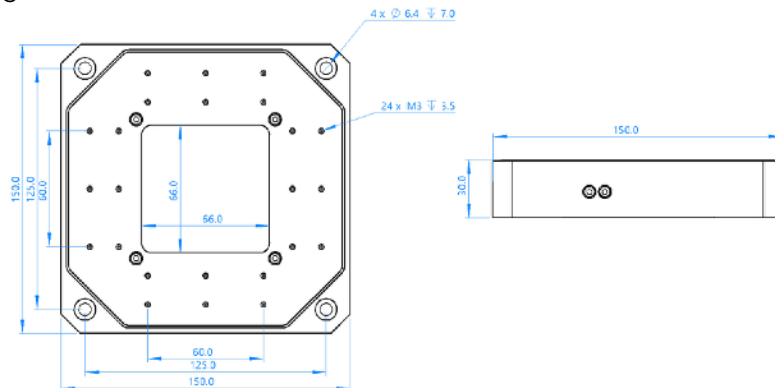


Carrier.HS100.xy.C

Feature

- Travel range in XY: 100 um
- Close loop resolution < 1nm;
- Max Load 3.5 kg;
- For microscopy-super resolution solutions.
- Non-magnetic (.NM) & ultra- high vacuum (.UHV) optional.

2D·Drawings



Carrier.HS100.xy.C – Specification

Optional Versions ⇨	Standard
	.NM, non-magnetic; .UHV, ultra-high vacuum compatible;
1 Direction of movement	X,Y
2 Footprint, high	150 mm × 150 mm × 30 mm
3 Mainbody Materials	Aluminium alloy & Stainless
4 Travel Range	100 um x 100 um
5 Effective through-hole size	66 mm × 66mm
Motion and positioning sensor	
6 Linearity Error (Z direction)	0.035%
8 Resolution (close loop/open loop)	1 nm / 0.2 nm
9 Repeatability	± 10 nm
10 Rigidity	2 N/ um
11 Resonance Frequency (unloaded/2.5 kg)	420 Hz/ 130 Hz
12 Max Load	3.5 kg
13 Integrated sensor(close loop)	Capacitive
14 Max Operating Voltage	Max. 150 V
Others	
15 Operating temperature range	15 ~40 °C
16 Weight	1 kg